

PART OF THE NW 1/4, SEC. 33, T.7N., R.3E., S.L.B. & M.

114

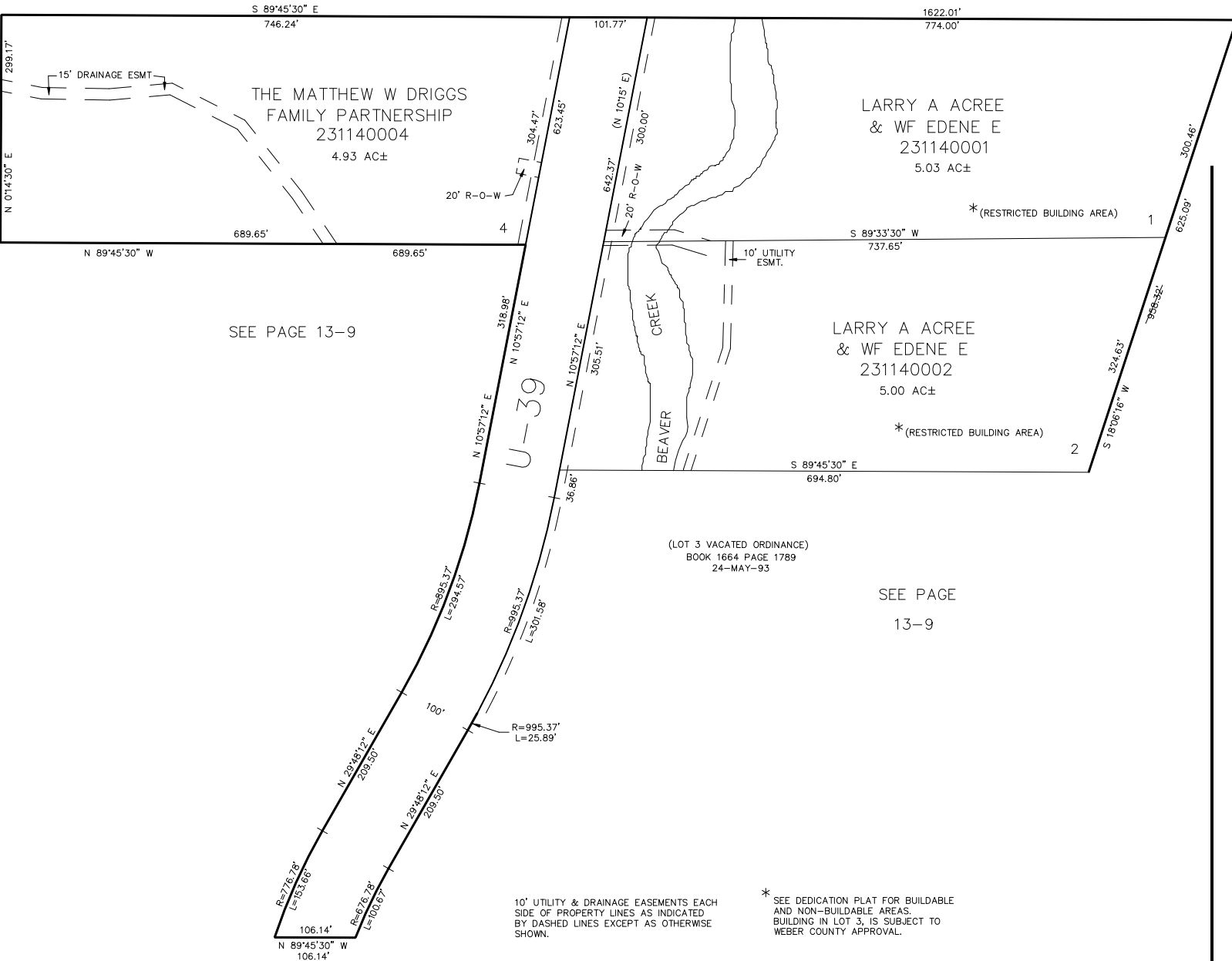
KATHY PARK SUBDIVISION

IN WEBER COUNTY

TAXING UNIT: 58

SCALE 1" = 100'

SEE PAGE 15



SEE PAGE 13-9

SEE PAGE

13-9

FOR COMPLETE ENG DATA SEE
ORIGINAL DEDICATION PLAT IN
BOOK 35, PAGE 50 OF RECORDS.